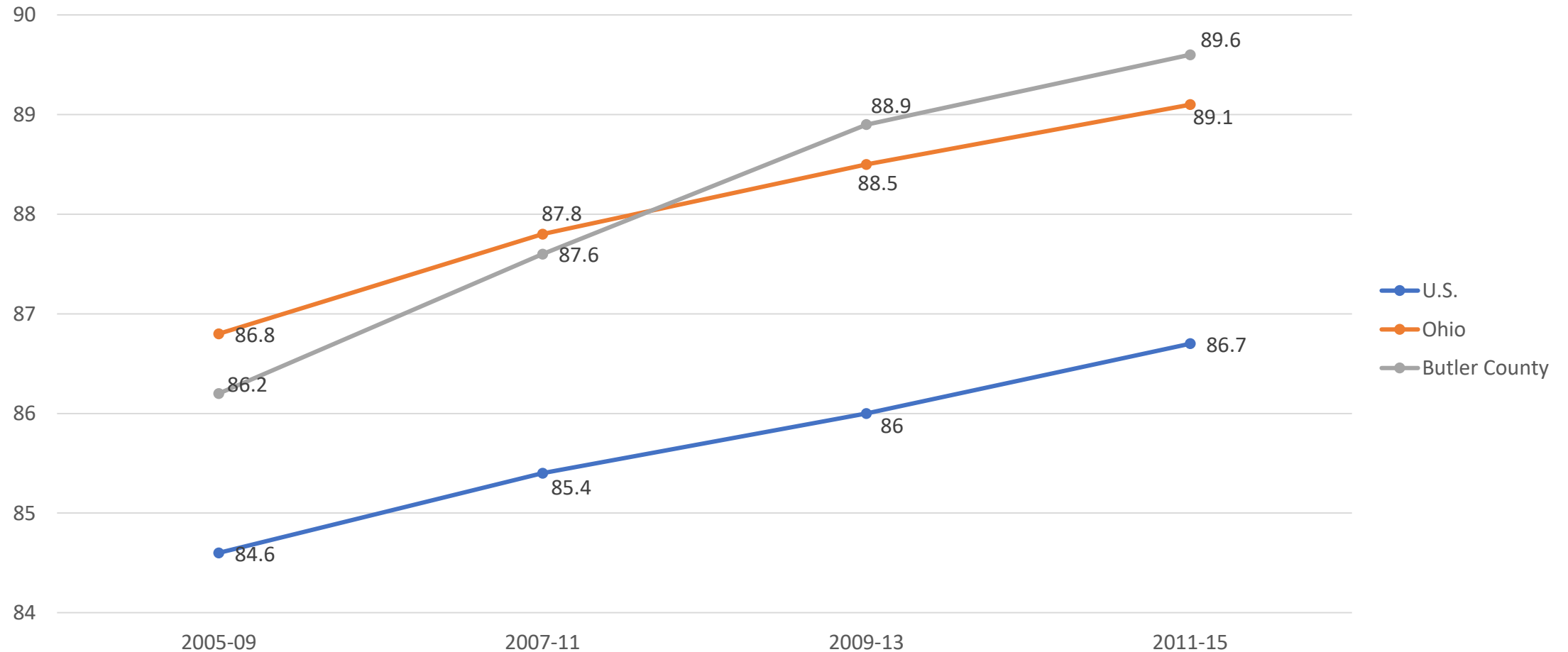


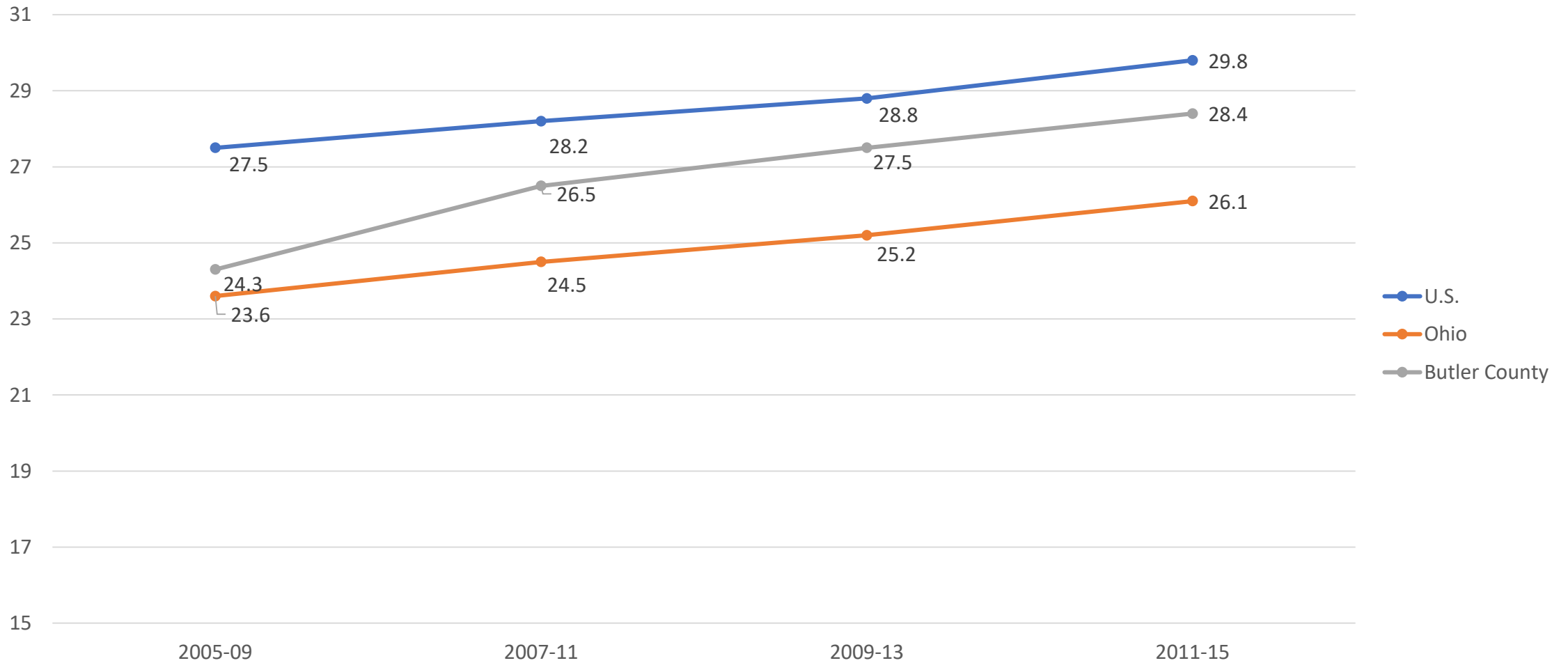
Butler County, Ohio

Economic Data

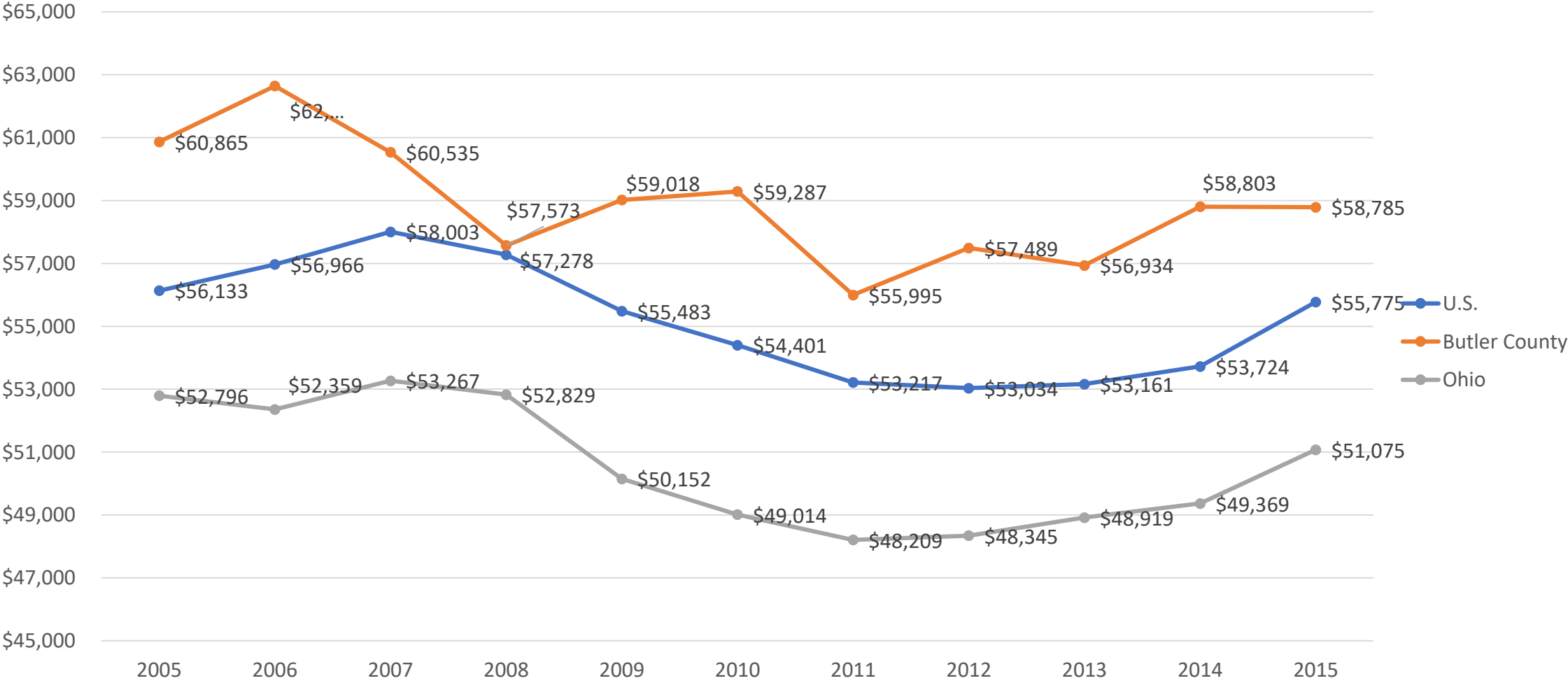
Educational Attainment – High School Diploma or Higher



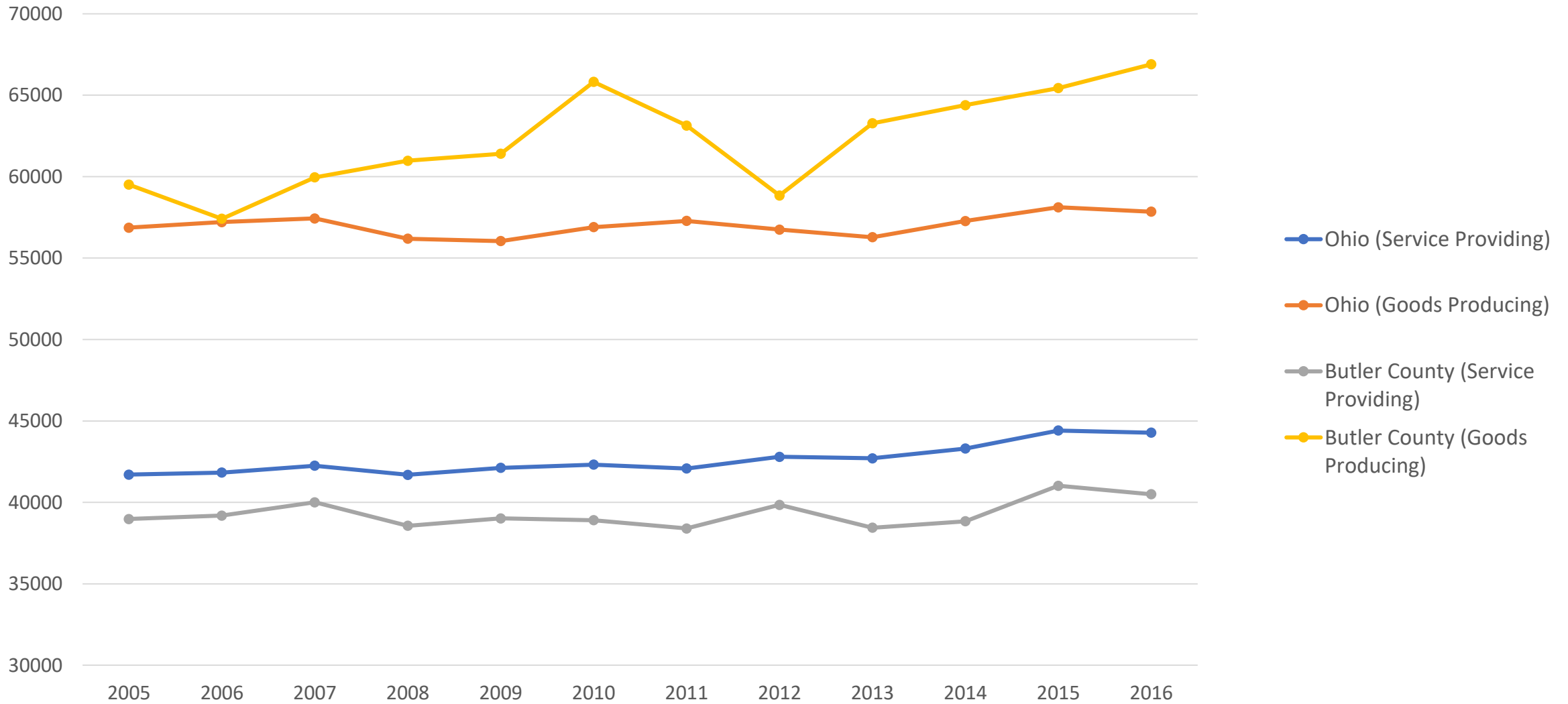
Educational Attainment – BA Degree or Higher



Median Household Income



Average Pay



Employment

- In Labor Force
 - 2012-2016 Estimates: 64.8%
 - 2007-2011 Estimates: 67.0%
- Employed
 - 2012-2016 Estimates: 60.8%
 - 2007-2011 Estimates: 61.2%
- Unemployment Rate
 - 2012-2016 Estimates: 6.1%
 - 2007-2011 Estimates: 8.6%

Occupation	2007-2011 Estimates	2012-2016 Estimates
Management, business, science, and arts occupation	34.3%	37.8%
Service Occupation	16.8%	16.7%
Sales and Office Occupations	26.7%	24.1%
Natural resources, construction, and maintenance occupations	8.0%	7.0%
Production, transportation, and material moving occupations	14.1%	14.4%

INDUSTRY	2007-2011 Estimates	2012-2016 Estimates
Agriculture, forestry, fishing and hunting, and mining	0.50%	0.50%
Construction	5.10%	5.00%
Manufacturing	17.40%	16.10%
Wholesale trade	3.50%	3.10%
Retail trade	12.60%	13.00%
Transportation and warehousing, and utilities	4.80%	4.20%
Information	1.50%	1.30%
Finance and insurance, and real estate and rental and leasing	6.80%	6.80%
Professional, scientific, and management, and administrative and waste management services	9.40%	10.20%
Educational services, and health care and social assistance	22.80%	22.50%
Arts, entertainment, and recreation, and accommodation and food services	9.00%	10.20%
Other services, except public administration	4.00%	4.20%
Public administration	2.80%	2.80%