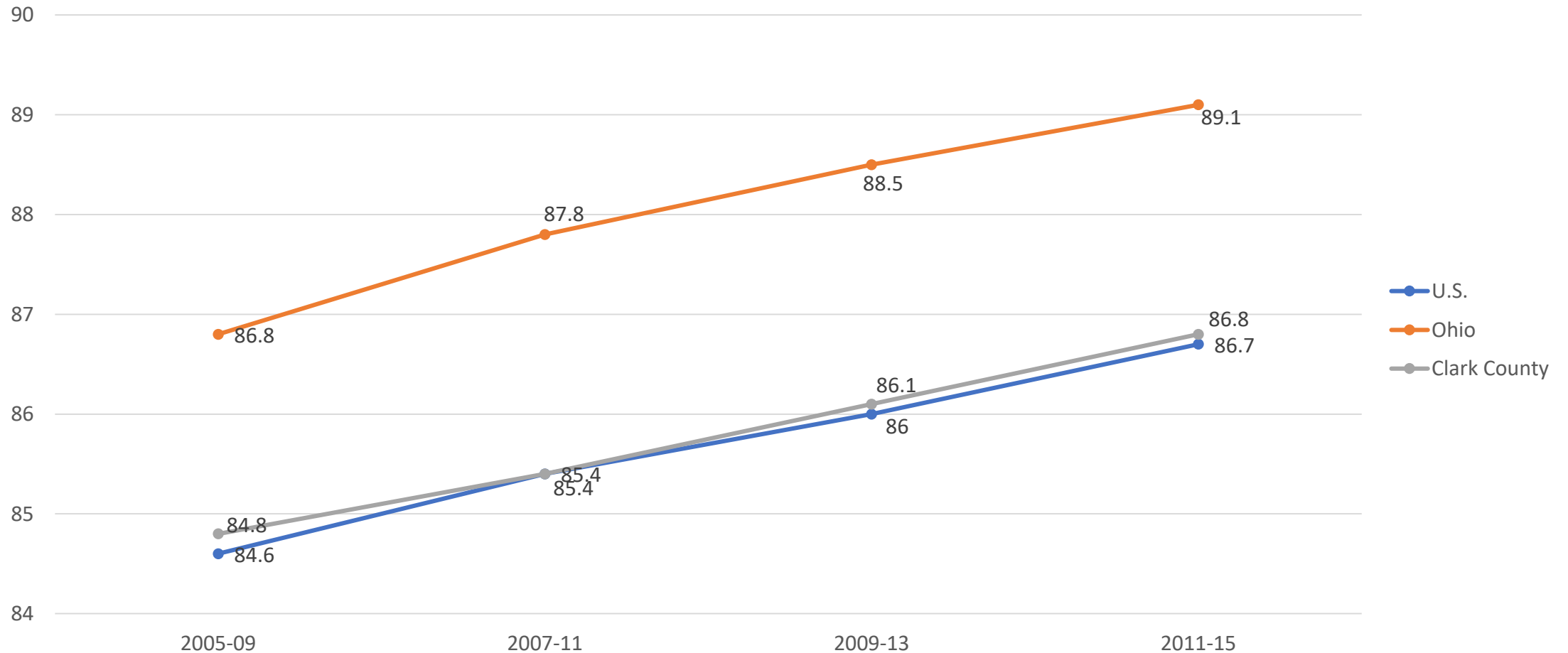


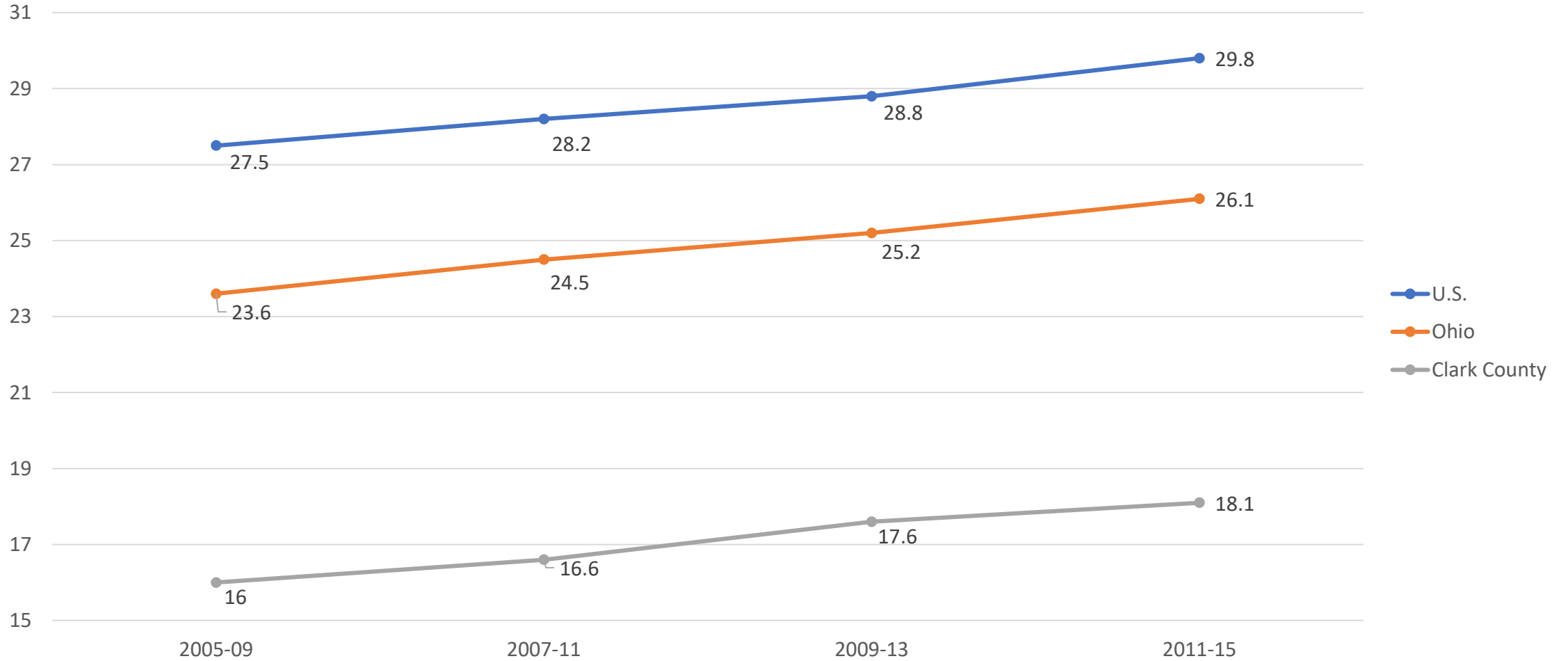
# Clark County, Ohio

Economic Data

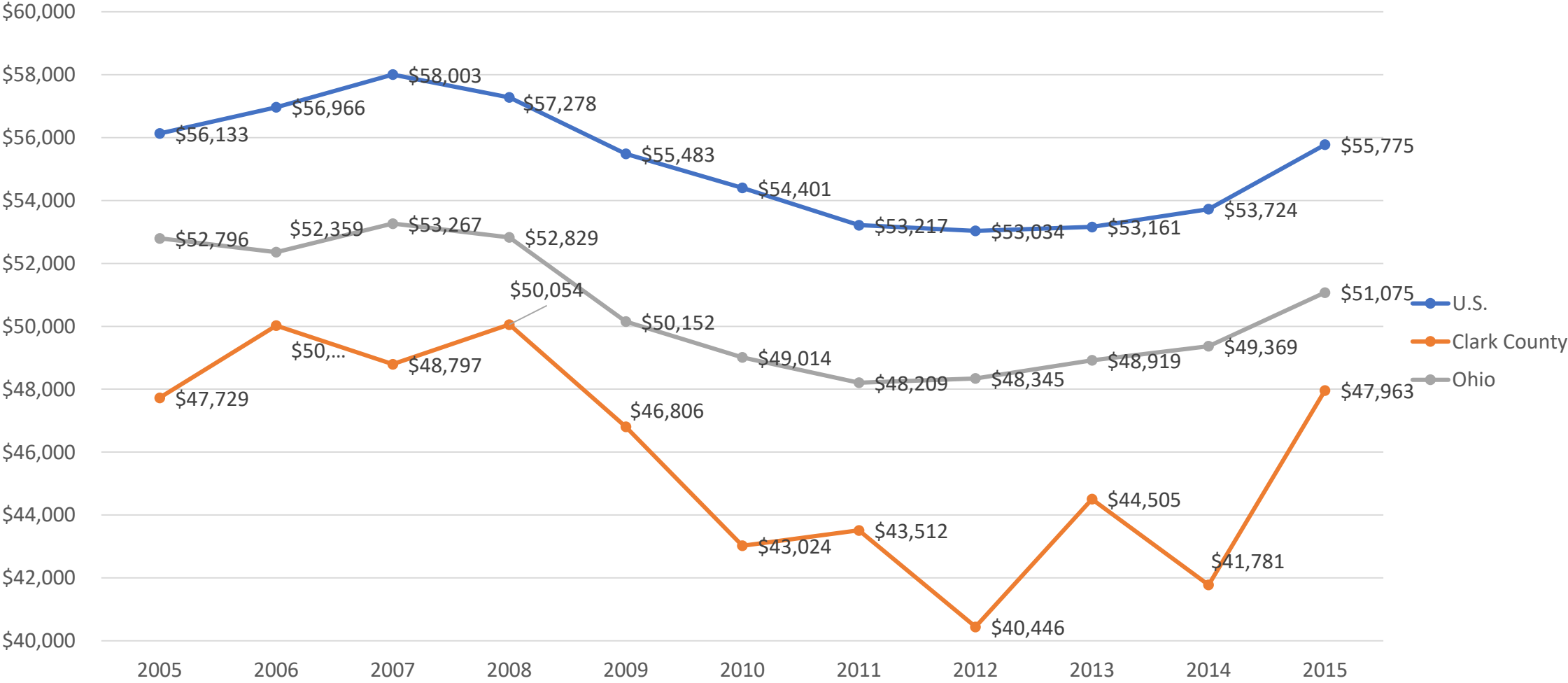
# Educational Attainment – High School Diploma or Higher



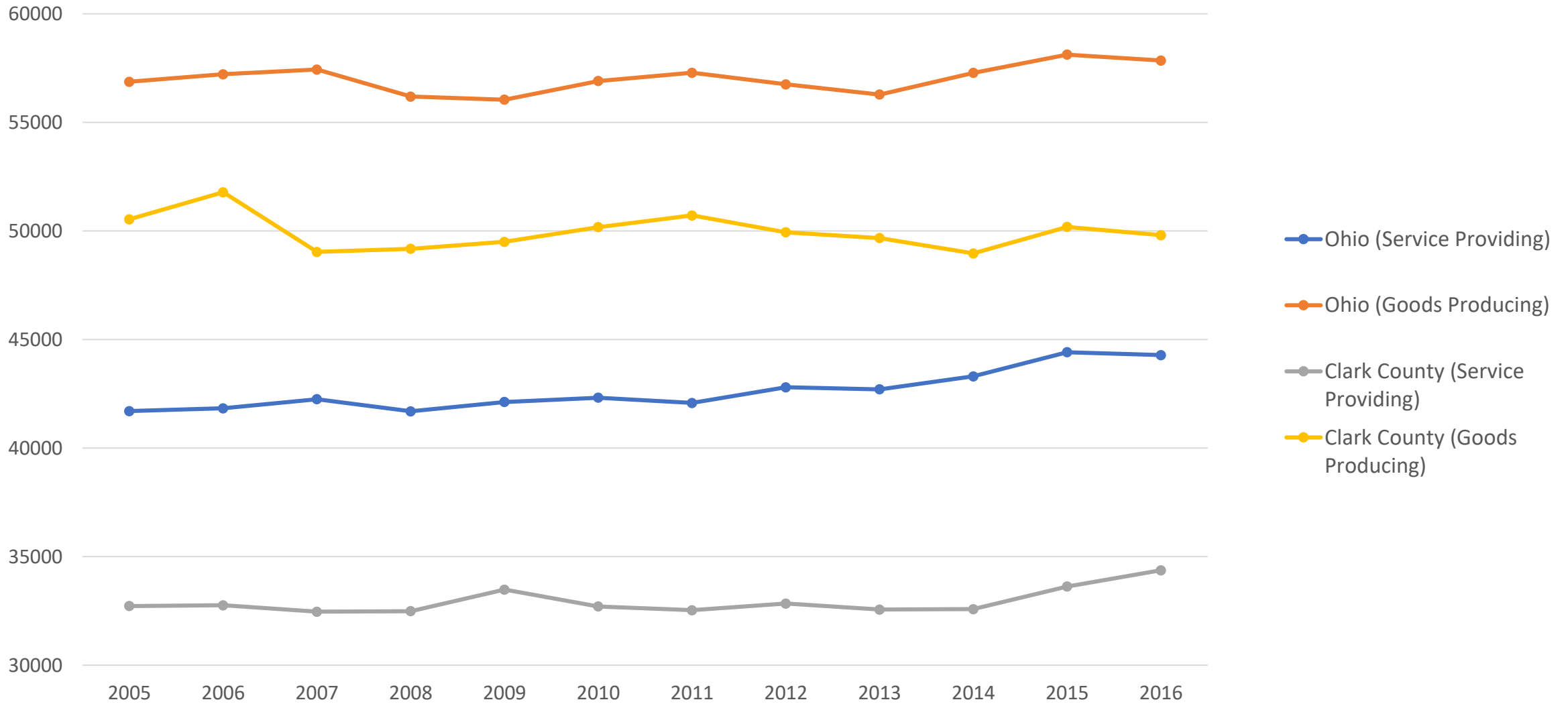
# Educational Attainment – BA Degree or Higher



# Median Household Income



# Average Pay



# Employment

- In Labor Force
  - 2012-2016 Estimates: 60.5%
  - 2007-2011 Estimates: 61.0%
- Employed
  - 2012-2016 Estimates: 55.0%
  - 2007-2011 Estimates: 54.6%
- Unemployment Rate
  - 2012-2016 Estimates: 8.9%
  - 2007-2011 Estimates: 10.1%

Occupation	2007-2011 Estimates	2012-2016 Estimates
Management, business, science, and arts occupation	28.4%	28.6%
Service Occupation	18.4%	18.3%
Sales and Office Occupations	25.5%	23.7%
Natural resources, construction, and maintenance occupations	9.1%	8.4%
Production, transportation, and material moving occupations	18.6%	21.0%

INDUSTRY	2007-2011 Estimates	2012-2016 Estimates
Agriculture, forestry, fishing and hunting, and mining	1.40%	1.00%
Construction	5.00%	4.60%
Manufacturing	15.80%	18.40%
Wholesale trade	3.60%	3.00%
Retail trade	13.00%	11.90%
Transportation and warehousing, and utilities	4.20%	4.30%
Information	1.30%	1.20%
Finance and insurance, and real estate and rental and leasing	5.10%	5.60%
Professional, scientific, and management, and administrative and waste management services	6.80%	7.80%
Educational services, and health care and social assistance	25.20%	24.20%
Arts, entertainment, and recreation, and accommodation and food services	8.30%	8.70%
Other services, except public administration	4.90%	4.50%
Public administration	5.40%	4.80%